



# 2023 Ram Selection Day



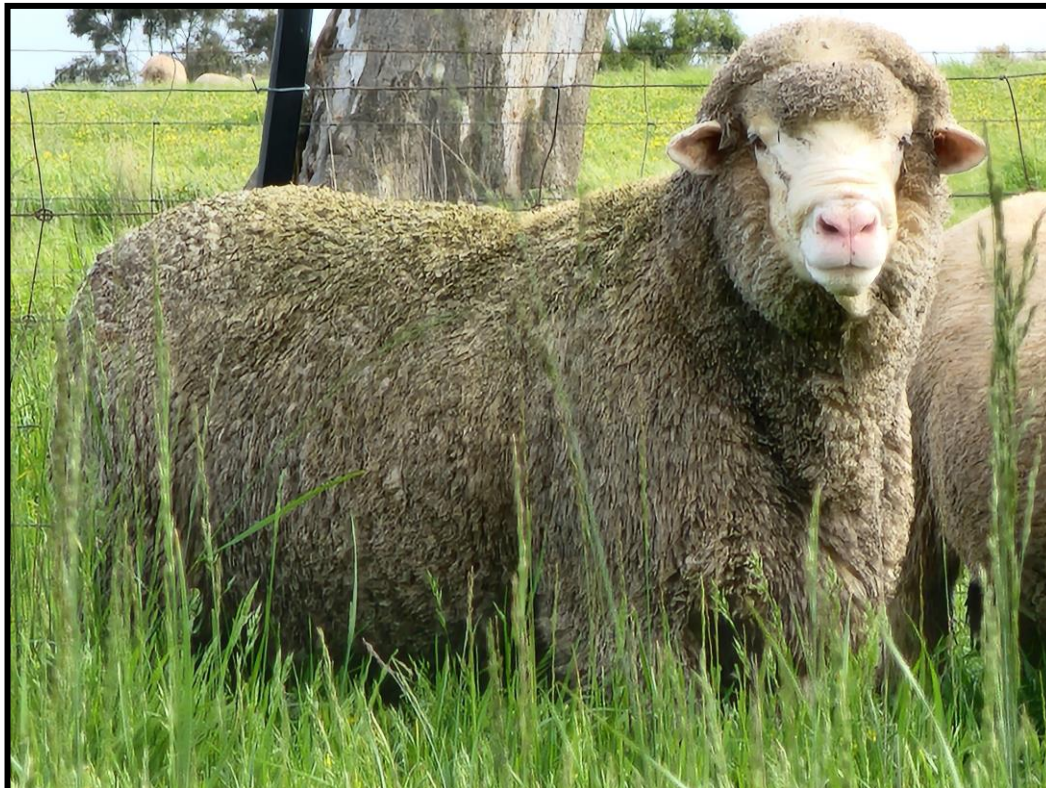
Thursday, 9<sup>th</sup> November 2023

Stirling Dohne Stud, 538 Astons Road, Glenthompson VIC

Inspection from 9am

Contact: Murray Rogerson 0412 157 699

[murrayrogerson1954@gmail.com](mailto:murrayrogerson1954@gmail.com) [www.stirlingdohne.com.au](http://www.stirlingdohne.com.au)



Stud Sire ST180040 – Photo taken 26<sup>th</sup> October 2022

Stud Sire ST180040 – Is entered in the Coonong Dohne Sire Evaluation  
Photo taken 2<sup>nd</sup> February 2021



**Nutrien**  
Wool

**Nutrien**  
Ag Solutions<sup>®</sup>



**Wool**  
**Stud Stock**  
**Livestock**

**Tim Button**  
**Steven Chalmers**  
**Sam Savin**

**0419 628 484**  
**0427 908 831**  
**0407 939 910**



**AMSEA COONONG SIRE EVALUATION**  
**2021 Drop Weight & Carcass Adjusted Sire Means**  
**Stud Sire: ST180040**



	Wether					Ewes
Progeny No.	WWT	PWT	YWT	YEMD	YFAT	PWT
71	35.3	42.2	46.3	25.8	3	52.4



**AMSEA MERINOLINK SIRE EVALUATION**  
**2022 Drop Weight & Carcass Adjusted Sire Means**  
**Stud Sire: ST200036 Preliminary Results**



Progeny No.	Adjusted Sire Means		FBV		Visual Traits - Breech	
Progeny No.	WWT	PWT	WWT	PWT	BRWR	BCOV
45	27.6	34.9	4.5	6.9	2.3	2.9



**AMSEA BALMORAL SIRE EVALUATION**  
**2020 Drop Jigsaw Weight & Carcass Adjusted Sire Means**  
**Stud Sire: ST140079**



Progeny No.	WWT	PWT	YWT	YEMD	YFAT
47	21.6	37.2	41.1	24.9	3

**26/12/2022 NATURAL WEAN ONLY SIRE COMPARISON**

	Sires				
Activity	ST140079	ST180040	ST190019	ST200036	Average
Joined Ewe No.	26	51	52	45	43.5
Weaned Ewe No.	19	29	36	31	28.75
Weaned Ewe Av. Wt.	65.6kg	63.1kg	65.3kg	64.5kg	64.6kg
Weaned Ewe Wean Rate.	137%	145%	128%	129%	134%
Weaned Ewe Wean Ratio.	58.2%	64%	55.8%	62%	59.9%
TwinLamb Av. Wean Wt.	26.5kg	24.6kg	26.7kg	27.1kg	26.1kg
Single Lamb Av. Wean Wt.	29.5kg	33.3kg	29.9kg	34.1kg	31.8kg
Combined Lambs Av. Wean Wt.	27.9kg	27.9kg	28.5kg	31kg	28.8kg
Birth to Wean Av. Day No.	117.4	119.4	116.4	117.7	117.7
Birth to Wean Av. Daily.Wt.Gain.	237.6grms	233.6grms	244.6grms	263.4grms	245.3grms

**2022 Drop Sale Rams - Highlighted in Blue are the Top 10% and Green are the Top 30% for that trait, for the whole breed.**

														ASBV'S				Actuals							
2 Specially Selected Rams at \$3000														Body Weight (kgs)								Foot	Dag		
Tag No	Dam	Sire	Con	DOB	RT	PWT	PEMD	PFAT	YCFW	YFD	YDCV	Dohne+	Final	26/12/22	23/06/23	Micron	CV	GFW	CF	SD	SL	Score	Score		
ST220114	ST190172	ST200036	Nat	24/08/22	1	5.39	0.56	0.14	16.21	0	-0.33	155.01	R	42	50.5	17.2	16.2	1.8	100	2.8	65	M	M		
ST220155	ST180185	ST180040	Nat	30/08/22	2	5.76	0.76	0.23	8.69	-0.13	-0.92	157.18	R	33	51.5	16.8	16	1.5	100	2.7	60	L	M		
3 Specially Selected Rams at \$2500																									
ST220035	ST180054	ST200036	ET	18/08/22	1	5.66	0.56	0.08	13.45	0.51	-0.62	147.52	R	46.5	60.5	19.1	14.5	1.9	99.7	2.8	65	M	M		
ST220175	ST190108	ST190019	Nat	31/08/22	2	5.96	1.07	0.11	7.76	0.34	-1.33	165.16	R	35	48	18	15	1.5	99.9	2.7	55	L	H		
ST220262	ST170356	ST190019	Nat	14/09/22	1	6.5	1.41	0.67	-2.4	0.13	-1.13	148.53	R	30	53	15.8	17.5	1	100	2.8	45	L	H		
12 Selected Rams at \$1500																									
ST220022	ST150181	ST200036	ET	18/08/22	1	4.57	-0.08	-0.25	9.26	-0.67	-0.37	141.66	R	42	54.5	17.6	16.9	2	99.7	3	70	M	H		
ST220041	ST160009	ST200036	ET	18/08/22	1	4.15	0.53	-0.11	8.62	-0.2	-0.62	152.58	R	48	59	17.8	15.7	2	99.8	2.8	80	M	M		
ST220113	ST150193	ST140079	Nat	24/08/22	2	3.63	0	-0.33	3.09	-0.68	-0.86	128.07	R	26.5	39.5	16.4	15.2	1.4	100	2.5	85	O	H		
ST220139	ST170382	ST180040	Nat	28/08/22	2	5.37	0.83	0.2	9.42	1.51	-0.91	143.5	R	31	49.5	20.3	15.3	1.5	99.4	3.1	70	M	O		
ST220157	ST140024	ST180040	Nat	30/08/22	2	3.12	0.53	-0.05	9.36	0.3	-0.66	128.51	R	22	40	17.3	17.8	1.3	100	3.1	80	L	H		
ST220161	ST190177	ST180040	Nat	31/08/22	1	5.17	0.69	0.11	9.95	-0.08	-0.03	145.46	R	34	52	17.7	20.2	1.7	99.8	3.6	70	O	H		
ST220176	ST190108	ST190019	Nat	31/08/22	2	6.12	1.04	0.08	7.31	-0.11	-1.08	168.02	R	34.5	50.5	16.8	16.4	1.5	100	2.8	70	M	O		
ST220196	ST170206	ST200036	Nat	3/09/22	1	5.08	0.41	0.27	13.74	0.31	-0.06	146.4	R	37.5	54	18.3	17.6	1.6	99.7	3.2	70	L	M		
ST220205	ST180103	ST190019	Nat	4/09/22	1	5.23	0.5	0.13	13.06	0.52	-0.23	140.15	R	35.5	50.5	17.5	17.3	2	100	3	60	O	H		
ST220252	ST150181	ST200036	Nat	13/09/22	1	5.24	-0.07	-0.25	10.05	-0.77	-0.35	146.62	R	38	50	16.2	17.1	1.7	100	2.8	75	H	H		
ST220255	ST160233	ST190019	Nat	14/09/22	2	5.5	1.36	0.5	2.68	-0.17	-0.64	153.3	R	24	41.5	16.2	17.1	1	100	2.8	65	M	H		
ST220256	ST160233	ST190019	Nat	14/09/22	2	5.48	1.39	0.54	2.16	-0.02	-0.92	152.62	R	22	42	16.6	15.2	1	100	2.5	60	L	H		
16 Selected Rams at \$1000																									
ST220032	ST180057	ST200036	ET	18/08/22	1	3.49	0.28	-0.04	9.84	-0.46	-0.73	139.19	R	40.5	51.5	17.1	15	1.6	100	2.6	75	M	H		
ST220037	ST200101	ST200036	ET	18/08/22	1	4.4	0.59	0.12	13.87	0.34	-0.12	141.09	R	42	49	19.1	17.6	1.8	99.6	3.4	75	H	H		
ST220048	ST150181	ST200036	ET	19/08/22	2	4.5	-0.03	-0.21	6.28	-0.95	-0.59	141.22	R	27.5	49	16.9	15.6	1.5	100	2.6	75	L	H		
ST220092	ST150099	ST190019	Nat	21/08/22	1	5.48	1.02	0.36	8.86	0.53	-0.32	143.3	R	36	51	17.7	17.4	1.6	99.7	3.1	80	L	H		
ST220107	ST180108	ST190019	Nat	23/08/22	2	5.51	0.95	0.05	8.06	0.09	-0.39	155.1	R	27.5	44	16.7	18.2	1.1	100	3	70	L	H		
ST220109	ST170205	ST180040	Nat	24/08/22	2	3	-0.01	-0.1	2.83	-0.58	-0.64	130.24	R	29.5	33.5	16.3	16.9	1	100	2.8	80	O	H		
ST220137	ST180120	ST200036	Nat	27/08/22	1	5.35	0.7	0.21	17.97	-0.12	0.28	159.13	R	36.5	55.5	17.1	18.7	1.7	100	3.2	70	L	H		
ST220173	ST180308	ST180040	Nat	31/08/22	2	2.84	0.49	0.04	8.41	0.1	-0.3	136.55	R	32	42.5	17.2	17.8	1.5	100	3.1	65	O	M		
ST220191	ST160175	ST190019	Nat	2/09/22	2	4.81	1.19	0.52	4.1	0.03	-0.95	150.64	R	29.5	43	16.1	16.7	1	100	2.7	60	L	H		
ST220202	ST200222	ST180040	Nat	4/09/22	1	4.77	0.5	-0.1	7.56	-0.12	-1.24	154.83	R	35.5	48	16.8	15.3	1.5	100	2.6	60	M	M		
ST220204	ST170130	ST200036	Nat	4/08/22	1	3.72	0.85	0.3	9.02	-0.87	-0.26	136.2	R	30	43.5	15.9	17.7	1.1	100	2.8	60	L	H		
ST220210	ST170158	ST190019	Nat	5/09/22	1	4.58	0.94	0.24	-0.04	-0.63	-0.43	141.51	R	30	48	15.6	18.9	1.2	100	3	60	L	H		
ST220214	ST190044	ST200036	Nat	5/09/22	3	6.91	0.16	-0.12	14.82	-0.76	-0.38	169.74	R	38	46.5	16.3	16.2	1.5	100	2.6	55	M	H		
ST220217	ST150251	ST190019	Nat	6/09/22	1	2.87	0.48	0.06	3.74	0.68	-0.04	122.48	R	21.5	36	17.3	20.3	1.2	100	3.5	55	L	M		
ST220242	ST190190	ST200036	Nat	9/09/22	2	4.76	0.26	-0.24	13.68	-0.51	-0.05	154.48	R	31	37	15.8	18.6	1.1	100	2.9	70	O	H		
ST220248	ST170135	ST200036	Nat	10/09/22	2	5.48	0.47	0.12	17.83	0.35	0.24	148.89	R	30.5	47	17.4	17.5	1.4	100	3.1	60	O	M		